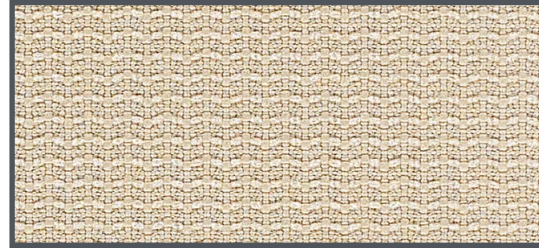


tackboard/screen fabric | grade two

glint | grade two



turret F8162



serene F8062



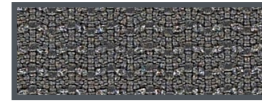
vera F8042



pumice F8122



column F8092

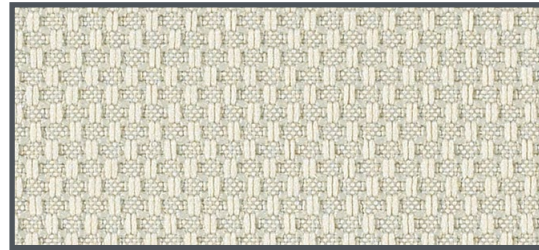


shale F8152



caspian F8072

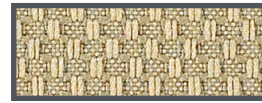
kinect | grade two



veil F7022



nimbus F7132



mushroom F7112



passion F7032



mercury F7102

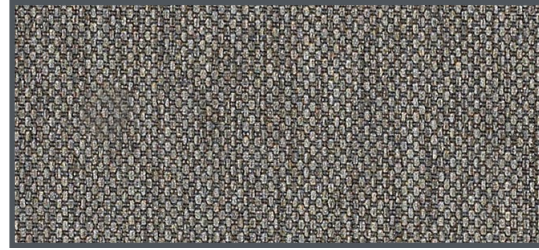


alloy F7072



cove F7062

script | grade two



charcoal F7512



shadow F7582



sterling F7602



taupe F7612



zinc F7622



slate F7592



sand F7572

pact | grade two



calla F6692



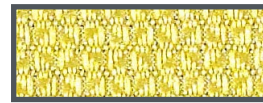
toasty F6702



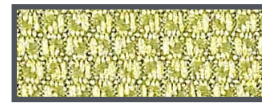
putty F6682



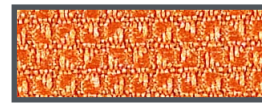
taupe F6822



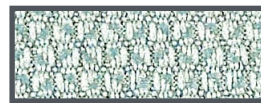
lime F6832



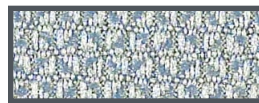
fern F6792



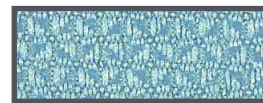
nectar F6732



coastal F6722



harbour F6802



azure F6762



delft F6842



roma F6812



dove F6712



patina F6872



lily F6852



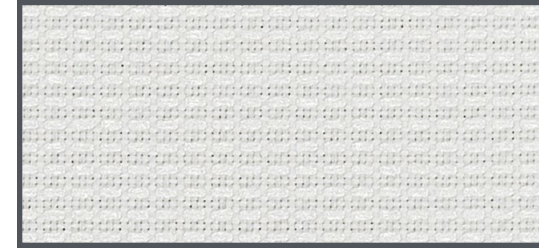
sketch F6902



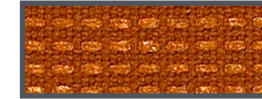
midnight F6892

upholstery fabric | grade two, three & six

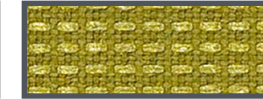
millennium c zero | grade two



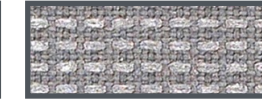
clean F8562



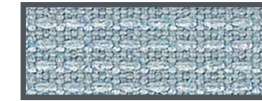
amber F8512



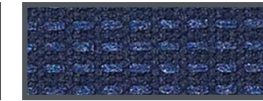
peridot F8682



anchor F8522



voyage F8782

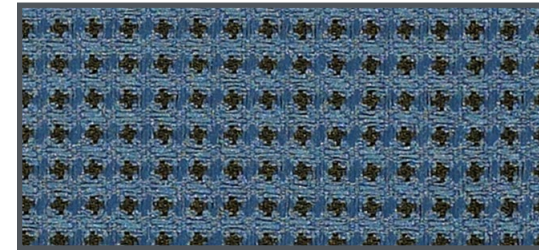


coastal F8572

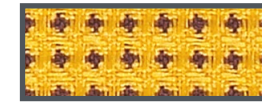


onyx F8662

expo | grade two



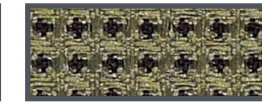
sky F3582



lemon F3552



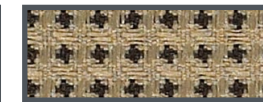
festive F3522



leaf F3572



fog F3512



latte F3562



tuxedo 3502

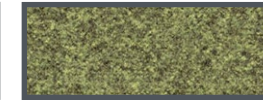
feltro | grade three



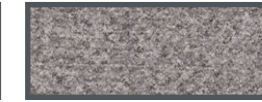
cloud F9583



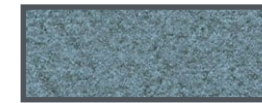
birch F9533



sprout F9683



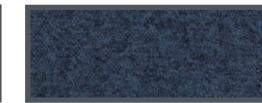
steel F9703



spa F9673

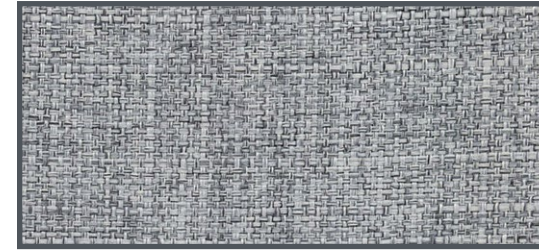


dusk F9593



ink F9613

mello | grade three



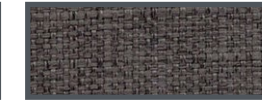
mineral F7893



thicket F7963



fossil F7843



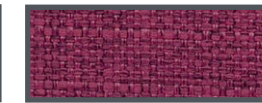
sable F7943



river F7933

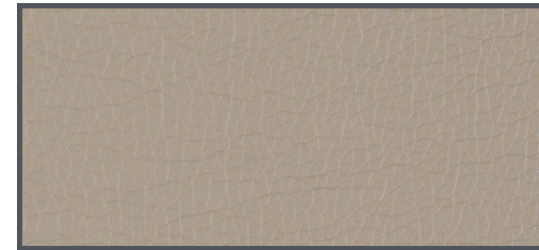


aegean F7783



fushcia F7853

canter epu | grade six



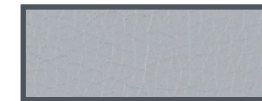
quarry F5786



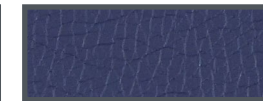
alfalfa F5516



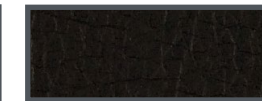
ballad F5536



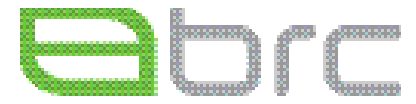
lucid F5696



ink F5666






onyx F5746



tackboard/screen & upholstery | grade two, three & six

fabric specifications

pattern	content	width	weight	 breaking strength	 colorfastness to light	 flammability
glint	100% post consumer recycled polyester	66" usable	17.0 ± 1.0 oz./lin. yd.	ASTM 5034 335 lbs. min. warp 366 lbs. min. fill	A4.5 - AATCC 16 opt 3, class 4.5 40 hours min.	ASTM E-84 class 1 or A
kinect	100% post consumer recycled polyester	66" usable	17.8 ± 1.0 oz./lin. yd.	ASTM 5034 364 lbs. min. warp 375 lbs. min. fill	A4.5 - AATCC 16 opt 3, class 4.5 40 hours min.	ASTM E-84 class 1 or A
script	89% post consumer recycled polyester 11% polyester	66" usable	1.07 lbs	ASTM 5034 299 lbs. min warp 373 lbs. min fill	A4.5 - AATCC 16 opt 3, class 4.5	ASTM E-84 class 1 or A
pact	65% post industrial recycled polyester, 35% post consumer recycled polyester	66" usable	13.0 ± 1.0 oz./lin. yd.	ASTM 5034 292 lbs. min. warp 307 lbs. min. fill	AATCC 16 opt 3, class 4 60 hours min.	CA Bulletin 117 2013, UFAC class 1, ASTM E-84
millennium c zero	85% post consumer recycled polyester, 15% polyester	54" usable	0.99 lbs	ASTM 5034 336 lbs. min. warp 279 lbs. min. fill	AATCC 16 opt 3, class 4 60 hours min.	CA Bulletin 117 2013, UFAC class 1, NFPA 260 class 1, ASTM E-84
feltro	100% polyester	56" usable	1.23 lbs	ASTM 5034 306 lbs. min. warp 299 lbs. min. fill	AATCC 16 opt 3, class 4 60 hours min.	CA Bulletin 117 2013, UFAC class 1, NFPA 260 class 1, ASTM E-84
mello	80% post consumer recycled polyester, 20% polyester	56" usable	1.01 lbs	ASTM 5034 379 lbs. min. warp 352 lbs. min. fill	AATCC 16 opt 3, class 4 60 hours min.	CA Bulletin 117 2013, UFAC class 1, NFPA 260 class 1, ASTM E-84
canter epu	100% EPU polyurethane polyester backing	54" usable	1.72 lbs	ASTM 5034 0 lbs. min. warp 0 lbs. min. fill	AATCC 16 opt 3, class 4	CA Bulletin 117 2013, UFAC class 1, NFPA 260 class 1
expo	65% post industrial recycled polyester, 35% post consumer recycled polyester	54" usable	0.54 lbs	ASTM 5034 142 lbs. min. warp 143 lbs. min. fill	AATCC 16 opt 3, class 4	CA Bulletin 117 2013, UFAC class 1, NFPA 260 class 1